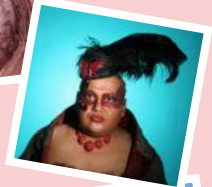




# G15 GORTON COLLEGE

28 - 30 June 2019

# FESTIVAL



Where  
Inspiration  
Thrives

Friday

Saturday

Sunday

Family

Food & Drink



# GIRTON COLLEGE FESTIVAL



**Mistress**

**Professor Susan J. Smith**



**Visitor**

**The Rt Hon The Baroness  
Hale of Richmond**

It is a pleasure and a privilege to welcome you to this Festival of ideas and inspiration marking the 150th anniversary of Girton's Foundation. A feast of activity, it sums up all that is special about our College, profiling core values rooted in excellence, inclusion and an ethic of care.

We hope the programme will keep you on your toes as you check out the research frontier, have your say on today's hot topics, or travel into the inferno and out to the edges of the universe.

Then take time to relax... Prepare to be dazzled by music and magic, enthralled by portraits and poetry, drawn into journeys through time, and roundly entertained in the company of old friends and new. So please, enjoy your weekend, as we raise a toast to the next 150 years.



**By kind permission of the Mistress,  
Fellows and Scholars.**



**Mistress Professor Susan J. Smith**  
**Vice-Mistress Karen Lee**  
**Senior Tutor Dr Sandra Fulton**  
**Bursar Debbie Lowther**  
**Junior Bursar Maureen Hackett**  
**Assistant Bursar Catherine Rawlings**

### 2019 Committee

Deborah Easlick, Dr Simone Maghenzani (Co-Chairs), Dr Liliana Janik (Co-Chair First Phase), Professor Peter Abrahams, Thomasina Ball, Brian Buncombe, Dr Stuart Davis, Dr Martin Ennis, Molly Hale, Cherry Hopkins, Rachael Humphrey, Graham Rawlings, Hannah Sargent, Michelle Stanley, Hannah Westall.

### Development Office

Susie Bromwich, Dr Emma Cornwall, Benji Easlick-Shoolman, Tamsin Elbourn-Onslow, Anne Greenwood, Dr Hannah James, Ingrid Koning, Jenny Nelder

### The College Heads of

#### Departments and their teams:

Accommodation, Bursary, Catering, Conference, Gardens, Grounds, House Services, Human Resources, IT, Library & Archive, Maintenance, Mistress's Office, Porters' Lodge, Summer Programmes, Surveyor, Tutorial & Admissions.

All details correct at time of printing.  
Cover Photo credit for M. Faultless:



**Deborah Easlick**  
Official Fellow and  
Development Director



**Dr Simone Maghenzani**  
Official Fellow, Tutor  
and Director of Studies  
in History

## Welcome from the Co-Chairs of the 2019 Committee

Inclusive excellence is Girton's living tradition. From the first five female pioneers in 1869 to today's emphasis on widening participation, our collective aim is to make the University of Cambridge accessible to all regardless of their background.

Girton's 150th Anniversary Festival showcases the many crucial conversations that our scholars are leading on, and which will shape tomorrow's world. The weekend as a whole reflects our community's cutting edge research and profiles our commitment to all round personal development through music, sports and art.

From Dame Karen Pierce's fifth and final Girton150 Anniversary Lecture, on 'United Nations: Parliament of Fools or Parliament of Everyman' to Lady Hale, Lady Arden and Dame Rosalyn Higgins 'in conversation' on women in Law, to Professor Lord Martin Rees on the future, Professor Wallace-Hadrill on the past, and Dr Rowan Williams on Religion, the hot topics of today are all on the agenda. Add to this world-class music, including the Royal Welsh School of Music and Drama's Brass Band, and art for all — panel discussions, unveilings, Open Studio and children's banners — and you have the makings of an unforgettable weekend. Oh yes, don't miss our theatre performance of *Blue Stockings* staged for the first time in its original setting of Girton College!

We give heartfelt thanks to the presenters and performers who have enabled us to assemble such an exciting programme. We are also immensely grateful to everyone behind the scenes without whose hard work and imagination this Festival would not be happening. Thank you!



## 1 17:30 Welcome Drinks

Enjoy a sparkling start to the evening as the Visitor and the Mistress welcome you to a festival of ideas and inspiration marking the 150th anniversary of our Foundation.

*Emily Davies Marquee*



## 2 18:30 Opening Ceremony and Fanfare

The Festival opens with a tribute to the founding members of the College, including Jasper Dommett's newly-commissioned 'Fanfare to Girton', a ceremony of admission, and speeches by the Visitor, the Mistress, and newly-elected Honorary Fellow, her Excellency Dame Karen Pierce.

## 3 19:00 Celebrating Our Heritage

A short tribute to Girton's pioneering spirit by the brass band of the Royal Welsh College of Music and Drama directed by Dr Robert Childs. Travel by way of Louisa Trewartha's 'Flight', from Philip Harper's 'Kingdom of Dragons' to Philip Sparke's 'Cambridge Variations', and prepare to be surprised!

*Emily Davies Marquee*



### The Royal Welsh College of Music and Drama Brass Band

Since forming in 2002 this world-class ensemble, one of Britain's best, has set the pace

for modern brass performance, appearing on TV and radio and attracting young players from around the world.

### Dr Robert Childs

Robert is a leading figure in the world of brass having directed top bands and performed at the highest level as a soloist in some of the world's most prestigious venues. An inspiring and sought-after teacher, he is Director of Brass Band Studies and a Fellow of the RWCMD, and has received many awards, including including the John Edwards Memorial Award for outstanding contribution to Welsh Music.



4

## 20:00 Celebratory BBQ Dinner

With entertainment by comedians Jonathan Mayor, Dr Phil Hammond and Cansu Karabiyik and close-up magic from Tony Rix and Terry Machin.

*Emily Davies Marquee*



### Jonathan Mayor

Girtonian Jonathan 'studied' Classics (he can picture Dr Dorothy Thompson with her head in her hands even now) and was also a 'Choral Scholar' (ditto a stricken Dr Martin Ennis). The Manchester Evening News describes him as '*a self-obsessed, glittery queen with a larger-than-life personality*'.

### Cansu Karabiyik

Pembroke student Cansu is a regular on the London/Cambridge comedy scene. She's Danish, of Kurdish descent, and spends her free time making people uncomfortable with her relentless social commentary. She was a BBC New Comedy Award Nominee in 2018 and was recently featured on *The Guilty Feminist Live Tour*.



### Dr Phil Hammond

Girtonian Phil has been a comedian of sorts for 30 years, initially with Tony Gardner in *Struck Off and Die*, and latterly as a solo performer satirising health and healthcare. He is currently planning to become Health Secretary and is working on two Edinburgh Fringe shows *The Great Health Con* (about the true meaning of health) and *Vote Dr Phil?* (about his electoral challenge to his MP, Jacob Rees-Mogg)



5

## 22:00 Live Music and Dancing

Enjoy the Festival Bar and dance into the evening with a 25-piece brass extravaganza presented by the Royal Welsh College of Music and Drama, including classic brass and big band repertoire, film music and Broadway hits.

*Emily Davies Marquee*



6

## 9:30 – 10:30 Women Growing Older Gracefully?

A panel discussion chaired by Dr Phil Hammond with Alex Rotas, Professor Wendy Savage and Professor Sarah Harper. This discussion will challenge the stereotypes about ageing and investigate the issues associated with living longer.



SATURDAY 29 JUNE



### Dr Phil Hammond

Girtonian Phil is an NHS doctor, *Private Eye* journalist, author, broadcaster, comedian. A GP for 20 years, he spent two years in sexual health and seven years in an NHS team helping young people with severe fatigue. Formerly a lecturer at the Universities of Birmingham and Bristol, he has published five books and done five UK comedy tours. He is the founder of the Intelligent Kindness Party.

### Professor Sarah Harper

Girtonian Sarah is Professor of Gerontology at the University of Oxford, a Fellow at University College Oxford, and the Founding Director of the Oxford Institute of Population Ageing. As individuals in high income countries have started to live longer and in better health, so we have begun to recognise a need to redefine 'old age'.



### Alex Rotas

During her 60s Alex has been a sports photographer specialising in photographing sportsmen and women in their 60s – 100+ who still compete nationally and internationally. Alex shares some of her images of elite competitive sportswomen aged 60+. These women challenge stereotypes about ageing and demonstrate the capabilities of the ageing female body.



### Professor Wendy Savage

Girtonian Wendy is a retired Senior Lecturer in Obstetrics and Gynaecology and Honorary Professor at Middlesex University. She says growing older is not much fun as friends become frail or die and one's body starts to deteriorate. Thanks to the NHS we are living longer and in better shape. She will discuss the work of 'My death My decision' who campaign to change the law to allow people to decide when they want to die.



7

**9:30 – 10:15 Religion and Equality**

Dr Rowan Williams

How important is the concept of equality in religious traditions and beliefs? What part does religion play in promoting equality and justice in society, and what are the challenges that arise? This talk will explore questions arising from Dr Williams' experience in advocating for a fairer, more equal society.

*Emily Davies Marquee***Dr Rowan Williams**

Dr Williams is currently Master of Magdalene College. From 2002 to 2012 he served as the 104th Archbishop of Canterbury. During his time as a Fellow at Clare he was arrested and fined for singing psalms as part of the CND protest at Lakenheath air-base. He is a Fellow of the British Academy and a Fellow of the Royal Society of Literature and of the Learned Society of Wales. He became Lord Williams of Oystermouth in 2013. Amongst his writings on a wide range of theological, historical and political themes Dr Williams is a noted poet and translator of poetry, and, apart from Welsh, speaks or reads nine other languages.

8

**9:30 – 10:15 Girton Challenge: Round One**

Come and watch a team of Girton's current students battle the College's Fellows and Staff in the first round of Girton's answer to *University Challenge*. The competition is run by the University Quiz Society and chaired by Dr Margaret Mountford.

*Barbara Bodichon Marquee***Dr Margaret Mountford**

Girtonian Margaret studied French, German and Law, was a solicitor for 25 years, then studied Classics at UCL gaining a PhD in Papyrology. She took part in *The Apprentice* series for BBC. She now chairs a privately-owned food group and a number of charities.



9



## 10:30 – 11:00 Research Highlight: Burning Down Parliament and Other Stories

Dr Caroline Shenton

Girton's Secretary to Council used to be Director of the Parliamentary Archives. Come and hear about her prize-winning research on the Palace of Westminster, and get the behind-the-scenes view of why the Houses of Parliament are so badly in need of restoration – whatever your political views.

*Old JCR*

10

## 10:45 – 11:30 The World in 2050 and Beyond

Professor Lord Martin Rees

The world has existed for 45 million centuries but this is the first when one species, ours, has the planet's future in its hands. The talk will address the opportunities offered by new technologies; bio, cyber, AI and space and the challenges stemming from the unsustainable pressures we're collectively imposing on resources and the environment.

*Emily Davies Marquee*



### Professor Lord Martin Rees

Professor Rees is Astronomer Royal and a former Director of the Institute of Astronomy. He was Master of Trinity College between 2004–12 and President of the Royal Society during the years 2005–10. He is a member of the House of Lords. His recent book *On the Future* addresses long-term issues that have been one of his main concerns in the last decade.

11



## 10:45 – 11:30 Girton Challenge: Round Two

Watch a second team of Girton's current students take on a team of alumni in Girton's answer to *University Challenge*.

*Barbara Bodichon Marquee*



## 12 10:45 – 11:45 Good Finance, Bad Finance, Ugly Finance

How can finance be used to serve all citizens? In this panel, led by Dr Kamiar Mohaddes, we will consider the role of finance in exacerbating crisis, but also its potential in ending poverty and increasing productivity.

*Stanley Library*



### Dr Kamiar Mohaddes

Kamiar is a Janeway Fellow in Economics at Cambridge and a Senior Lecturer and Fellow in Economics at Girton.

### Dr Mia Gray

Mia is a Supernumerary Fellow at Girton and an Economic Geographer focusing on the regional implications of changing structures of work: rising precarity, occupational change, the 'gig' economy, underemployment, and gendered and racialised patterns of inclusion and exclusion. She has also been a senior analyst and Research Fellow at the Cambridge Centre for Alternative Finance.



### Colm O'Shea

Girtonian Colm is the Founder of COMAC Capital, a global macro hedge fund which managed \$6bn at its peak. Previously he managed macro trading for Soros' Quantum Fund and was an MD at CitiGroup.

13



## 11:00 – 12:00 Guided Garden Tour

Explore the historical gardens with Dr Roland Randall. See page 17, item 27 for more information.

*Croquet Lawn*

14

## 11:30 – 12:00 Research Highlight: Zoology

Dr Arik Kershenbaum

Arik is a Lecturer at Girton. He will give an informal presentation covering his research on communication in wolves and dolphins; and what that tells us about communicating with aliens.

*Old JCR*



## 15 12:00 – 13:00 Representing People: Portraits of all Kinds

A panel discussion chaired by Frances Gandy with Ingrid Pollard, Daphne Todd, Paul de Monchaux and Martin Rowson. This discussion will compare and contrast different approaches to the art of depicting people as practised by our panellists. It will attempt to draw some common threads and also establish important distinctions. *Image credit: Cartoon by George du Maurier from Punch's Almanack 1887 Vol 92*

*Stanley Library*



### Frances Gandy

Frances is a Life Fellow of Girton. She was Girton's Librarian and Curator 1987–2015; Tutor and Graduate Tutor 1990–2016. Until 2016 she taught and lectured in English and American Literature across the Cambridge Colleges and for the University English Faculty. Her research interests have focussed on Wallace Stevens, William James and Gertrude Stein.

### Daphne Todd OBE

Daphne, Honorary Fellow, is an award-winning painter (BP Portrait Award 2010; Ondaatje Prize for Portraiture and Gold Medal 2001; Hunting Group National Art Prize 1984) and the first female president of the Royal Society of Portrait Painters. Five of her works are in the National Portrait Gallery collection.



### Ingrid Pollard

Ingrid is a photographer, media artist and researcher. Ingrid has developed a social practice concerned with representation, history and landscape with reference to race, difference and the materiality of lens based media. Her work is included in numerous collections including the UK Arts Council and the Victoria and Albert Museum.

### Paul de Monchaux

Paul is the artist who made *Girton Column*, the sculpture on the front lawn of the College installed in 2012. It is one of a number of large scale public commissions carried out since retiring as Head of Fine Art and Head of Sculpture at Camberwell School of Art in 1986.



### Martin Rowson

Martin is a multi-award winning cartoonist, illustrator, writer, graphic novelist, broadcaster, ranter and poet. In 2001 Rowson was appointed Cartoonist Laureate for London. His work has appeared regularly across the gamut of UK newspapers and magazines including *The Guardian*, *Time Out*, *Morning Star*, *The Times* and *The Spectator*.

*Image credit: Emyr Young*

# FESTIVAL HIGHLIGHT

## Women in Law

### 16 12:00 – 13:00 Women in Law

Lady Hale, Lady Arden and Dame Rosalyn Higgins in conversation. Girton has supplied the first woman Judge, then President of the International Court of Justice, the first woman Judge in the Chancery Division of the High Court, and the first woman Law Lord and Supreme Court Justice. All three will be in conversation with the Vice-Mistress Karen Lee, another very distinguished Girton lawyer.

*Emily Davies Marquee*



#### **Karen Lee**

Girtonian Karen read Law. Currently Official Fellow and Vice-Mistress of Girton and Director of Publications at the Lauterpacht Centre for International Law (one of the specialist Research Centres of the Cambridge Law Faculty). She specialises in public international law case-law and is the Joint Editor of the *International Law Reports*.

#### **Lady Hale**



Baroness Hale of Richmond, DBE PC LLD FBA read Law at Girton College. She was an academic lawyer and law reformer (first woman appointed to the Law Commission in 1984) before becoming a full time judge in 1994, rising through the ranks to become the first woman Law Lord and Supreme Court Justice, and now its President. She became Visitor of Girton College in 2004.



#### **Lady Arden**

Lady Arden read Law at Girton College and Harvard Law School and practised at the Bar and became a QC. She was appointed the first woman judge in the High Court's Chancery Division in 1993, and the Supreme Court from the Court of Appeal in 2018. Amongst other roles, she is an ad hoc judge of the European Court of Human Rights and has published two books.

#### **Dame Rosalyn Higgins**

Dame Rosalyn Higgins GBE FBA QC read Law at Girton College and Yale University. She has held Chairs in International Law at Kent University and the London School of Economics and many other senior positions. She served on the International Court of Justice from 1995-2009, its first woman Judge (elected President in 2006). She was also Legal Adviser to the Chilcot Inquiry on Iraq.



SATURDAY 29 JUNE



17

## 12:00 – 13:00 Girton Challenge: Final

The exciting finale to the morning's competition with the trophy presentation by Bamber Gascoigne.

*Barbara Bodichon Marquee*



**Bamber Gascoigne** was the original presenter (from 1962) of the television quiz show *University Challenge*. He held the position for 25 years. Phrases he often used which became catchphrases include: 'Your starter for ten', 'fingers on buzzers' and 'I'll have to hurry you'.



18



## 13:15 – 14:15 Tea Dances

Some of the ladies of Girton loved to dance! Tea Dances were a chance for the students to relax and leave their books and lessons behind for a little while. Come and learn a dance or two from the exuberant Edwardian age. There are two guided sessions with the Time Will Tell theatre company at 13:15 and 13:45.

*Stanley Library*

19



## 13:15 – 14:30 Guided Tour of the College Buildings

Led by Hannah Westall and Dr Hazel Mills.

The buildings of Girton tell an important story. They take us back to the earliest experiences of women students in Cambridge. This walking tour will outline the history of Girton's construction, visit several wings and key rooms, and explore the changing living conditions of College residents.

*Emily Davies Court*

### Hannah Westall

Hannah is the College Archivist and Curator and is responsible for managing and making accessible Girton's Archive and Picture Collection.

### Dr Hazel Mills

Hazel taught History for Fitzwilliam College and then Girton for nearly 20 years and for periods was a Girton Director of Studies in History.

20

**13:30 – 14:30 Girton Poetry Readings**

Girton has a strong poetic tradition, and a number of distinguished published poets are Girtonians. This poetry reading will include Grevel Lindop, Adam Crothers, Christine Webb and Dr Malcolm Guite, who will chair the event. We will also read poems by Girtonians such as Kathleen Raine and a selection from the Girton poetry group.

*Barbara Bodichon Marquee*

**Dr Malcolm Guite**

Poet-Priest Malcolm Guite is Chaplain and Supernumerary Fellow of Girton and teaches at the Faculty of Divinity.

**Adam Crothers**

Adam Crothers' first book, *Several Deer*, won the 2017 Shine/Strong Poetry Award and the 2017 Seamus Heaney Centre Prize. He was selected as one of *Poetry Ireland Review's* 'Rising Generation' poets.

**Grevel Lindop**

Grevel Lindop has published seven collections of poems. A biographer, critic and travel writer, he was a Visiting Fellow at Girton in 2018–19, and was formerly Professor of Romantic and Early Victorian Studies at Manchester University.

**Christine Webb**

One of two daughters of a working-class family, Christine Webb read English at Girton, taught in schools for many years and later worked part-time for Royal Holloway and for the LSE. She has published two collections *After Babel* and *Catching Your Breath*.



21

**14:30 – 15:00 Research Highlight: Materials Science**

Dr Sean Collins

Sean Collins (Henslow Research Fellow, Girton) will give an informal presentation about his research on revealing the unseen 'nano' world, all the way down to the individual atoms.

*Old JCR*



## THE FESTIVAL LECTURE

United Nations: Parliament of Fools or Parliament of Everyman?

**22 14:30 – 15:30 The fifth and final of the Girton150 Anniversary Lectures.**

Dame Karen Pierce

The multilateral system is under stress as never before, with the accustomed certainties of the post World War Two period gradually breaking down under pressure from global power dynamics. As the UK prepares to leave the European Union, and as the UN nears its 75th anniversary in 2020, what needs to be done to keep the UK an active force for good on the international stage and maintain the UN at the apex of the multilateral system that on the whole has kept the world safe from global war since 1945.



*Emily Davies Marquee*

### Dame Karen Pierce

Girtonian Karen Pierce became the United Kingdom’s Permanent Representative to the United Nations in New York in March 2018. Prior to this role, Dame Karen served as the Director General for Political Affairs and Chief Operating Officer of the Foreign and Commonwealth Office in London, from 2016.

### Previous Anniversary Lectures



**HIH Princess Takamado**

Netsuke and their Role in Introducing Japan to the West



**Professor Dame Pratibha Gai**

Atoms in Action



**The Rt Hon The Baroness Hale of Richmond**

100 Years of Women in Law



**Herman Narula**

Virtual Worlds: The Next Great Wilderness

**23 14:30 – 15:30 Early Music Concert**

This unique event brings together six world-class musicians, who all happen to be associated with Girton, for a performance of music dating from the 17th and 18th centuries. The concert will feature works for violin and cornetto as well as chamber organ and harpsichord alongside compositions for voice. *Main Hall*



**Dr Martin Ennis**

Martin is the inaugural Austin and Hope Pilkington Fellow and Director of Music at Girton and Senior Lecturer at the Faculty of Music. Martin combines university life with a busy career as a performer. His compositions have been performed in Westminster Abbey and the Royal Albert Hall.

**Professor Margaret Faultless**

Violinist and director, Margaret is a Girton Bye-Fellow and Director of Performance at the Faculty of Music. She is co-leader of The Orchestra of the Age of Enlightenment and Head of Historical Performance at The Royal Academy of Music. She is a Professor of the University of London and an Honorary Member of the Academy.



**Andrew Kennedy**

Andrew is Director of Music at Uppingham School and Musician-in-Residence. He was the winner of Cardiff Singer of the World Rosenblatt Recital Prize, the Royal Philharmonic Society Young Artists' Award, and was also a member of BBC Radio 3 New Generation Artists Scheme.

**Nicholas Mulroy**

Nicholas is a Musician-in-Residence at Girton. He has performed in New York's Carnegie Hall, at the Salzburg Festival, in the Sydney Opera House, at Glyndebourne and in Shanghai, Boston and the Opéra de Paris. Recordings include a Gramophone Award-winning Messiah.



**Jeremy West**

Jeremy is Jane Hodge International Chair in Historical Performance at the Royal Welsh College of Music and Drama. He is a Musician-in-Residence at Girton and a founder member of His Majestys Sagbutts & Cornetts and has performed to audiences in 38 countries across four continents.

**Gareth Wilson**

Gareth is Director of Chapel Music at Girton and a member of the Music Faculty. He is Director of Music at Christ Church, Chelsea and a Professor at the Royal College of Music. In addition to his conducting work, he is a composer whose music has been heard all over the world and has been broadcast on BBC Radio and Classic FM.



24

## 16:00 – 17:00 The Collegiate University and the Future of Higher Education

In a session facilitated by the Mistress Professor Susan J. Smith, the Vice-Chancellor is 'in conversation' with Madeleine Atkins, Stefan Collini, and you. With Brexit, fees, financial uncertainties and a changing world stage, what role can the collegiate university have in shaping the future of higher education? Do colleges matter, can learning be life-long, are two-year degrees feasible? No question is off the agenda.

*Emily Davies Marquee*



### Professor Stephen Toope

Professor Toope became the 346th Vice-Chancellor of the University of Cambridge in October 2017. Stephen joined Cambridge after a distinguished career as a scholar and academic leader. He was Director of the University of Toronto's Munk School of Global Affairs, and before that President and Vice-Chancellor of the University of British Columbia. He served as President of the Pierre Elliott Trudeau Foundation, and as Dean of Law at McGill University.

### Professor Dame Madeleine Atkins

Madeleine Atkins is President of Lucy Cavendish College and an Honorary Fellow at Girton. Her background includes reading Law and History, teaching at a school in Huntingdon, and a PhD and post-doctoral research contracts at the University of Nottingham. She served as Pro-Vice-Chancellor at the University of Newcastle and as Vice-Chancellor of Coventry University. Madeleine joined the Higher Education Funding Council for England (HEFCE) as its Chief Executive in 2014, retaining that post until 2018.



### Professor Stefan Collini

Stefan Collini is Professor Emeritus of Intellectual History and English Literature. He has written widely on 19th and 20th century literary and intellectual life, as well as on current debates about the nature and role of universities. He is also a frequent contributor to publications such as the *London Review of Books* and *The Guardian*.



25

**16:00 – 17:00 The Secrets of the Lawrence Room**

Chaired by Helen Van Noorden and Liliana Janik this panel discussion features three eminent Girtonian authors of chapters to the Lawrence Room book produced for the College's 150th anniversary. Marilyn Strathern, Dorothy Thompson and Frances Gandy will show how their contributions on objects in the Lawrence Room bring out their significance for the history of Girton College.

*Stanley Library*

**Dr Helen Van Noorden**

Helen is the Wrigley Fellow and Director of Studies in Classics at Girton. She researches ancient legacies of archaic Greek epic; her first book discussed the Golden Age myth; her next will rehabilitate the 'Sibylline Oracles'. She teaches a wide range of Greek literature and language.

**Dr Liliana Janik**

Liliana is a Fellow at Girton and Assistant Director of Research at the Division of Archaeology in the Department of Anthropology and Archaeology. Her research is on prehistoric art and heritage and focuses on prehistoric portable objects, figurines, cave and rock art.

**Frances Gandy**

Frances is a Life Fellow of Girton. She was Girton's Librarian and Curator 1987–2015; Tutor and Graduate Tutor 1990–2016. Until 2016 she taught and lectured in English and American Literature across the Cambridge Colleges and for the University English Faculty. Her research interests have focussed on Wallace Stevens, William James and Gertrude Stein.

**Professor Dame Marilyn Strathern**

Former Mistress, Marilyn Strathern is Honorary Life President of the Association of Social Anthropologists, and onetime holder of the William Wyse Chair in Cambridge. She made her name with comparative theorising on Melanesia and has written widely on reproductive technologies, intellectual property and audit cultures. She won the Balzan Prize in 2018. *Image credit: Photo Carletti for Balzan Prize*

**Dr Dorothy Thompson**

Dorothy is a Life Fellow of Girton where she used to be Director of Studies in Classics. She is an Honorary President of the International Association of Papyrologists and a Fellow of the British Academy. Most of her published work is on Hellenistic Egypt.

26



*Five of the first students in 1869-1870 (GCPH 7/2/1/1)*

### 16:00 – 16:45 Girton's Radical History: The Early Years (1869–1924)

Dr Hazel Mills

Girton was Britain's first residential college for women offering degree-level instruction and examination. From a small group of students in a rented house, by 1924 it was an internationally renowned College with over 180 young women in residence. Dr Mills will explore the origins and early history of this path-breaking institution.

*Barbara Bodichon Marquee*

#### Dr Hazel Mills

Hazel Mills taught History for Fitzwilliam and then Girton for nearly 20 years, and for periods was a Girton Director of Studies. Her academic research has focused on the history of women and gender after 1750. More recently she has been investigating the fascinating history of Girton College.



27

### 17:00 – 18:00 Guided Garden Tour

Led by Dr Roland Randall

Girton occupies one of the largest sites of any Cambridge College and its pastoral setting is unique. The garden, established early in the College's history still retains much of its original structure and design. It is a delightful combination of wild woodland, formal spaces, meadows, sports fields and orchard, all enclosed in a fine shelter belt of mature trees.

*Croquet Lawn*



#### Dr Roland Randall

Roland is a Life Fellow of Girton. He was one of the first male Fellows to join Girton when College went mixed in 1977 and had supervised Girton students in Geography for several years before that. He is a trustee and treasurer of Franciscan Aid and a trustee and past chair of the ACE Foundation.



**17:00 – 18:00 Women in STEM**

When a curious mind is given resources and opportunities to learn, research, test, teach, and invent, the possibilities are limitless. These four influential women in STEM discuss the importance of championing this important topic.

*Barbara Bodichon Marquee*

**Dr Nancy Lane Perham OBE**

For over 50 years a Fellow of Girton College, Nancy served as supervisor in Cell Biology and Tutor for Graduates in Science, Med and Vet, and is now a Life Fellow. A member of the Zoology Department, as a researcher and lecturer in Cell Biology, she is concerned for equality of Women in SET, and Chaired the Cabinet Office Report 'The Rising Tide', was the first Director of WiSETI (Women in Science, Engineering and Technology Initiative), and co-founder of the Athena Project with its Athena SWAN awards.

**Professor Dame Athene Donald**

Girtonian Athene studied Physics before undertaking a postdoc in the USA. She returned to Cambridge and became a Professor – the first woman in any of the physical sciences – in 1998 and an FRS in 1999. Since 2006 Athene has been championing women in science, as Director of WiSETI. She was the University's first Gender Equality Champion. Athene is the Master of Churchill College and an Honorary Fellow at Girton.

**Professor Dame Ann Dowling**

Girtonian Ann is President of the Royal Academy of Engineering and Professor of Mechanical Engineering at Cambridge, where she was Head of the Department of Engineering 2009–14. Ann is a member of the Prime Minister's Council for Science and Technology, a non-executive director of BP and of the Smiths Group, and was appointed to the Order of Merit in 2015.

**Professor Mary Fowler**

Girtonian Mary is a geophysicist and is Master of Darwin College. She was previously Head of the Department of Earth Sciences and Dean of the Science Faculty at Royal Holloway, London. She has served as Chair of the Committee of Heads of UK Geoscience Departments and Vice-President of the Royal Astronomical Society. Her book, *The Solid Earth: An Introduction to Global Geophysics*, was awarded the Prestwich Medal by the Geological Society in 1996.



29

## 17:00 – 18:00 The Frontiers of Diversity and Inclusiveness

Chaired by Dr Thomas Roulet

This panel discussion with Belinda Bell, Priscilla Mensah and Yulia O'Mahony will discuss how our institutions (higher education, private and non-profit sector, governments) can work together to build a more diverse and inclusive society. Supported by the John Lewis Partnership. *Stanley Library*



### Dr Thomas Roulet

Thomas is a Senior Lecturer in Organisation Theory and the Fellow in Sociology and Management at Girton. His work focuses on stigma and marginalisation.

### Dr Belinda Bell

Belinda is a social entrepreneur. She currently leads Cambridge Social Ventures (CSV), part of the Judge Business School. CSV has directly supported hundreds of social entrepreneurs from across the world; from fashion to farming, prosthetics to prisons.



### Priscilla Mensah

Priscilla founded Fly, the University's Network for women of colour in 2013 whilst a student at Girton. Priscilla was the first black woman in Cambridge University Student Union's history to be elected President.

### Yulia O'Mahony

Yulia is the Head of Diversity and Inclusion and Wellbeing, John Lewis Partnership. Yulia has worked for leading consulting firms in the UK and abroad as well as holding leadership roles in John Lewis.



30

## 18:15-19:00 On the Russia – China Border

Professor Dame Caroline Humphrey

Russia and China are diplomatically and strategically close to one another these days. But their long mutual northeast border provides evidence of a very complex relationship. What can we learn about these two post-imperial powers by examining the interactions that take place along their frontiers?

*Stanley Library*



### Professor Dame Caroline Humphrey

Caroline was a student and Research Fellow at Girton. As a Social Anthropologist she has done research and taught on Mongolia, Inner Mongolia, Nepal and India at Cambridge.



## Festival Highlight

### Blue Stockings

31

#### 16:50 – 19:30 Blue Stockings

This first full-length play by Olivier Award-winning playwright, theatre director and screenwriter, Jessica Swale, was premiered at The Globe in 2013. The action is set in and around Girton at the time of the first major vote on the admission of women to the University of Cambridge degrees in 1897. This is the first ever on-site performance!

*Woodlands Court (open air venue)*



32



#### 18:10 – 18:30 Interval and Drinks Reception

Festival guests are encouraged to come together for a celebratory toast and to get the evening going in style.

*Woodlands Court (open air venue)*

#### The Richings Players

An award-winning amateur theatre company that have been entertaining the Ivers in Buckinghamshire since 1926 producing over 200 shows in that time. A member of the National Operatic and Dramatic Association, they regularly perform three productions a year, ranging from pantomimes to musicals and comedies to murder mysteries.

SATURDAY 29 JUNE

## Activities throughout Saturday

33



### 10:00 – 15:00 Explore the quiet retreat of the Library

Explore the award-winning Duke Building and McMorran Library using a self-guided tour. Retreat upstairs to soak up the atmosphere and browse books on the history of the College and about famous Girtonians, and novels by alumni.

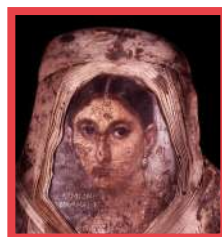
*Library*

34

### 10:00 – 12:00; 14:00 – 16:00 and 17:00 – 18:00 Uncover the Treasures of the Lawrence Room

Girton College's own museum comprises three major collections: Anglo-Saxon, Mediterranean and Egyptian (including Hermione – a 1st century AD Roman portrait mummy).

*The Lawrence Room*



35



### 10:00 – 16:00 World-leading Research: Discover Girton Fellows' current academic work

From history to astrophysics, this poster session showcases research highlights from across the Fellowship. Individual Fellows will discuss their work at set times see items 9, 14 and 21. *Old JCR*

36

### 10:00 – 15:00 Discover the College's History

Display of original archival material illustrating the history of the College.

*Little Reading Room (accessed via the Library)*



37



### Self-guided Tours: all day at your own pace

- Garden Tour
- Estate Tour
- People's Portraits

*Collect a leaflet from the Information Point*

38

### 10:00 – 16:00 Artist in Residence Open Studio – Simeon Barclay

As part of the Girton150 Festival the current Girton Artist in Residence, Simeon Barclay, will provide visitors open access to his studio at Grange Cottage. Simeon will be on hand to discuss his practice, his ongoing experience at Girton and the underlying themes and contexts that stimulate his research. *Image credit: Simeon Barclay, Liferoom, 2019, Installation view, Holden Gallery, Manchester School of Art, Courtesy of the artist.*



*Grange Cottage*



#### Simeon Barclay

Simeon draws upon a multidisciplinary practice to consider how memory, images and objects coalesce to form an index for contemplating subjectivity and its construction within contemporary culture. His work has been shown both nationally and internationally.

## Evening Feasts

39

### 19:00 – 19:45 Drinks Reception

Festival guests are encouraged to come together for a celebratory toast and to get the evening going in style. *Emily Davies Marquee*



40



### 19:45 – 22:00 Anniversary Formal Hall

Relive your time at Girton during the Anniversary Formal Hall with the choir singing grace and a menu selected especially for this celebratory occasion. Table plans can be found outside the Main Hall.

*Main Hall*

41

### 19:45 – 22:00 Anniversary Supper Club

A feast to remember provided by local award-winning Provenance Kitchen. Accompanied by live jazz from Ben Comeau. Table numbers will be shown on boards outside the marquee.

*Emily Davies Marquee*



## Festival Highlight Kaleidoscope

42

### 22:00 – 00:15 Kaleidoscope

We invite you all to gather together to experience this night time extravaganza. Come celebrate with us, with old and new friends, and be inspired and proud by all that you, and we, have achieved so far.

*Woodlands Court (open air venue)*

As dusk falls we move from the cerebral (and the competitive!) to the spectacular. At the heart of Kaleidoscope is an unmissable 30 minute light and sound extravaganza celebrating Girton's history, created especially for our celebrations this weekend.

To continue the celebratory feel we're delighted to welcome legendary troupe 'Tricity Vogue's All-Girl Swing Band' to begin the night and our very own Mystery Train to lead us into the small hours...



### 22:00 – 22:45 Tricity Vogue's All-Girl Swing Band

Tricity Vogue's irrepressible all-female ensemble bring their flair, *joie de vivre* and mischief to Girton to kick-off two hours of stunning, technicolour, entertainment.

Tricity Vogue's All-Girl Swing Band is an exuberant nine-piece full of cheeky vintage musical surprises, complete with horn section, harmonies and an irrepressible rhythm tap dancer. A mischievous modern take on traditional swing, led by ukulele-strumming cabaret diva Tricity Vogue (AKA Girtonian Heather Tyrrell).





### 23:00 – 23:30 Kaleidoscope

The heart of our late evening is not to be missed. As the court lights dim, we begin a kaleidoscopic 30-minute sound and light installation that tells the story of our College.

Spanning 1869 to the present day, Kaleidoscope weaves together live performances, video material, archive photographs, stunning lighting and birthday wishes from some rather special virtual guests.

### 23:30 – 00:15 Mystery Train

We end our evening celebration of all things Girton with our very own 'Rocking Rev' – Malcolm Guite – who fronts up Cambridge's best loved rootsy, blues and R'n'B band, Mystery Train.

Tonight they bring a good-time set featuring original songs as well as fantastic covers of 60s & 70s hits to get you dancing under the stars. Expect humour as well – one of their tracks is called 'Stuck on the A14' which remains a local favourite.



### Bar

The bar will be open throughout the evening.

*Woodlands Bar and Social Hub Café Bar*

43

## 8:00 – 8:30 Short Said Communion Service

This brief said service is for all, of any denomination, who would like to make their communion on Sunday. The order of service will be taken from the Church of England's Common Worship book and Malcolm Guite, the Chaplain, will be the celebrant and preacher.

*Chapel*



44

## 10:00 – 10:45 Women's Suffrage: did the vote change anything?

Dr Lucy Delap

It's been 101 years since some women gained the right to vote in the national franchise for parliamentary representatives, and since the first woman took her seat as an MP. This lecture asks what difference this made, in terms of feminist campaigning, policy, and women's incorporation into British politics. *Emily Davies Marquee*



### Dr Lucy Delap

Lucy is a Reader in Modern British and Gender history at the University of Cambridge and Fellow of Murray Edwards College. She has published widely on the history of feminism, gender, labour and religion, including the prize-winning *The Feminist Avant-Garde: Transatlantic Encounters of the early twentieth century*. She is currently working on a history of modern feminism titled *Feminism: a useable history*. Image credit: Louis Ashworth Varsity

45

## 10:00 – 11:15 Guided Tour of the College Buildings

Led by Hannah Westall and Dr Hazel Mills. See page 11, item 19 for further details.

*Emily Davies Court*

46



## 10:00 – 10:30 From Diamonds to Dodos: Meet the Girton Author, Julia Golding

Join Julia Golding for a family-friendly session, exploring through games and quizzes the life of an author. Test your scientific knowledge of curious facts, find out what Girton has to do with the world of musicals, and dress up as a pirate to learn about the treasure of storytelling.

*Fellows' Rooms*



### Julia Golding

Girtonian Julia is a multi-award winning writer for adults, young adults and children. A former British diplomat and Oxfam policy adviser, she has now published over 50 books in genres ranging from historical adventure to fantasy. Her first novel, *The Diamond of Drury Lane*, won the Waterstones Children's Book Prize 2006 and the Nestle Children's Book Prize 2006. Her latest children's novel, *The Curious Crime*, explores the dialogue between science and religion, set in an alternative Victorian timeline.

47



## 10:00 – 11:00 Festival Choral Service

This family-friendly service will feature beautiful music from the choir and a sermon by Girtonian Andrea Skevington, author of *The Lion Classic Bible* retelling. *Chapel*



SUNDAY 30 JUNE



## 48 10:45 – 11:30 Joan Robinson: Iconoclast

Professor Lord John Eatwell

Professor Eatwell will discuss the extraordinary creative career of Joan Robinson. A disruptive influence in Economics!

*Emily Davies Marquee*



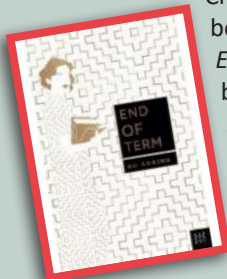
### Professor Lord John Eatwell

Professor Eatwell has taught Economics at Cambridge since 1970. His first book, *An Introduction to Modern Economics*, was co-authored with Joan Robinson. His work since has focussed on economic theory, international macro-economics and financial regulation. He is the President of Queens' College.

## 49 10:45 – 11:15 Meet the Author: Christina Koning

Christina Koning considers how her time at Girton inspired her to become a writer, and reads from several of her novels, including *End of Term*, the fifth in a series of 1930s mysteries featuring a blind detective.

*Fellows' Rooms*



### Christina Koning

Christina Koning is the award-winning author of ten novels.



## 50

### 10:45 – 11:15 Discover Suffragette Jiu Jitsu

Discover the story of Edith Garrud, the Jiu Jitsu Suffragette, and how she came to learn and then teach martial arts. Historical martial artists and interpreters will give a very physical and entertaining demonstration of the techniques she would have taught and how they work.

*The Festival Field*



Enfield Historical Re-enactors specialist School of Defence team is made up of martial artists who use historical sources to demonstrate how people have defended themselves through the ages.



## 10:45 – 11:45 Concert by Queen Victoria's Consort

A professional quartet of leading brass players this Victorian band performs on museum-quality period instruments from 1820–1900. This concert will include unique arrangements of compositions — some by Prince Albert himself — that would have been popular in the early years of Girton's operation. Resplendent in Victorian Sunday best (as they will be today). The ensemble has performed at Buckingham Palace, Burgh House, Alexandra Palace and for The London Transport Museum.

*Main Hall*

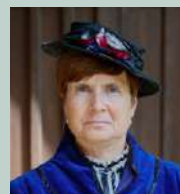


### **Andrew Kershaw** (Tuba / Ophicleide)

Andrew trained at the Royal Academy of Music and Trinity College of Music. Andrew has played with many of the country's top orchestras including The Royal Philharmonic Orchestra, The Royal Opera House Covent Garden, The Halle and the London Philharmonic Orchestra. He has toured with Elton John and performed at Shakespeare's Globe.

### **Sue Addison** (Trombone / Baritone horn)

Sue plays principal trombone with The Orchestra of the Eighteenth Century, Academy of Ancient Music, The Sixteen and the Gabrieli Consort. A founder member of His Majestys Sagbutts & Cornetts and of The Orchestra of The Age of Enlightenment, she is Professor of Baroque trombone at the Royal College of Music, Birmingham Conservatoire, Royal Northern College, and Trinity Laban.



### **Robert Vanryne** (Cornets)

Robert became a brass finalist in the BBC Young Musician of the Year competition at the age of 15. A graduate of the Royal College of Music he has both performed and recorded regularly with many of the leading period instrument ensembles as well as with modern orchestras throughout Europe. He is also an instrument maker, specialising in the reproduction of 17th and 18th century trumpets.

### **Jeremy West** (Horns)

Jeremy specialises in historical brass, most notably renaissance cornett and Victorian alto horn. He is a founder member of His Majestys Sagbutts & Cornetts – the leading ensemble of its kind, and Principal Wind Player with the Gabrieli Consort and Players.



52



## 11:15 – 11:45 Join the Girton Fire Brigade

A fire in a hay rick close to the College prompted three Girtonians to set up the College's own Fire Brigade. They received training from local firemen, purchased their own equipment and ran their own drills each term. Join our sub-captain (from Time Will Tell) as she explains the importance of good fire safety practise at Girton and demonstrates some of the useful skills needed to keep the College from burning down.

*Image credit: Fire Brigade Officers taken by R H Lord, 1889 (archive reference: GCPH 10/2/3)*

*The Festival Field*



53



## 11:30 – 13:00 Guided Garden Tour

Explore the historical gardens with Dr Roland Randall, including the re-opening of Honeysuckle Walk by Dame Rosalyn Higgins.

*Croquet Lawn*

54

## 11:45 – 12:45 Into the Inferno

Professor Clive Oppenheimer

A dive into the making of Werner Herzog's Emmy-nominated documentary, *Into the Inferno*, with the film's co-creator and volcanologist, Clive Oppenheimer. Clive takes us behind the scenes of the production and reflects on the collaboration between scientist and storyteller. He'll also share a sneak peek of what's next for the collaborative pair. *Fellows' Rooms*



### Professor Clive Oppenheimer

Girtonian Clive is Professor of Volcanology in the Cambridge Geography Department. He is interested in how volcanoes work, how to monitor them, the long-range societal impacts of large eruptions, and geoarchaeology. Clive's book *Eruptions that Shook the World* inspired the film *Into the Inferno*.

55



## 12:00 – 13:00 A Victorian Parlour Concert

This concert brings together members of Girton's music staff, alumni and students in a programme of works dating from approximately the first half-century of the College's existence. Domestic genres, such as songs, partsongs and piano duets, will form the bulk of the programme; composers will include Elgar, Vaughan Williams and Brahms.

*Stanley Library*

### Performers

Martin Ennis – Director of Music

Margaret Faultless – Bye-Fellow

Nicholas Mulroy – Musician in Residence and former Director of Chapel Music

Charbel Mattar – Singing teacher to the Chapel Choir

John Longstaff – Alumnus and first male Organ Scholar of Girton College

Milly Atkinson – Music student

Rachel Hill – Music student

SUNDAY 30 JUNE

56



## 12:00 – 12:30 Join the Suffrage Movement

As the Campaign for Votes for Women gathered momentum, Girton College had both Suffrage and an Anti-Suffrage Societies. But the roots of Girton's involvement with political agitation went back further to founder Emily Davies. Join our Girton Suffragist as she discusses the big issue of the day and the challenges it presents to women in general and to Girton College in particular.

*Image credit: Timelight Photographic*

*The Festival Field*



**Time Will Tell** provide bespoke historical theatre. Their aim is to provide audiences with a sense of the drama of the history that is relevant to them.

## Festival Highlight The 2019 People's Portrait

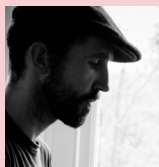
**57** 12:00 – 13:00 Unveiling of the  
2019 People's Portrait

Girton College is very proud to house the Royal Society of Portrait Painters 'People's Portraits' exhibition. The genesis of this exhibition was to represent ordinary people from all walks of life, offering a picture of the UK as it moved from the 20th to the 21st century. The faces of these extraordinary individuals now hang in the corridors of Girton, adding an upbeat, modern component to the College's permanent collection of art. New portraits by members of the Royal Society of Portrait Painters are added to the collection every year, and there are now over 50 paintings in the exhibition. The portraits were not commissioned by the sitter or an institution; each subject was chosen either because they captured the artist's eye or imagination, or because of a personal connection.



The session will include the unveiling of David Caldwell's portrait *The Boxer* and a talk by Simeon Barclay: *The Symbolic Made Physical – The Boxer as a vessel for social, political and national interests.*

*Emily Davies Marquee*

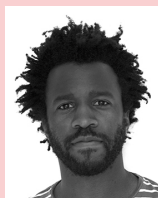


### David Caldwell RP

David Caldwell studied at the Glasgow School of Art and the Royal Drawing School London. David is a leading British figurative painter who works in oils from life. He is a member of the Royal Society of Portrait Painters and has many accolades to his name.

### Simeon Barclay

Simeon Barclay's multidisciplinary practice incorporates print, sculpture, video and installation as a means to consider contemporary anxieties around subjectivity. Simeon received his BA from Leeds Metropolitan University, Leeds and MFA from Goldsmiths College, London. His work has been shown both nationally and internationally.





58



**12:00 – 14:45 Tea Dances and Music from Queen Victoria’s Consort**

Some of the ladies of Girton College loved to dance! Tea Dances were a chance for the students to relax and leave their books and lessons behind for a little while. Come and learn a dance or two from the exuberant Edwardian age. There are also two guided sessions with the Time Will Tell theatre company at 12:00 and 13:45. In between dances there will be a performance from Queen Victoria’s Consort (see pages 11, item 18 and page 28, item 51 for more information). *Main Hall*

59



**12:00 – 12:30 Birds of Prey Performance**

A magnificent flying display of birds of prey by the English School of Falconry. *The Sports Ground*

60



**12:30 – 13:00 Discover Suffragette Jiu Jitsu**

Discover the story of Edith Garrud, the Jiu Jitsu Suffragette, and how she came to learn and then teach martial arts (see page 27, item 50 for further details).

*The Festival Field*



61

**13:15 – 14:30 Guided Tour of the College Buildings**

Led by Hannah Westall and Dr Hazel Mills. See page 11, item 19 for further details.

*Emily Davies Court*

62



**13:45 – 14:15 Join the Girton Fire Brigade**

Join our sub-captain as she explains the importance of good fire safety practise at Girton and demonstrates some of the useful skills needed to keep the College from burning down. See page 29, item 52 for further details.

*The Festival Field*



**63 13:45 – 14:45 Forty Years of Men at Girton**

What was it like to be the first men in an institution founded by and for women? What does it mean now, for men, to be educated in and work in an environment with such a strong feminist history? How has the cultural and academic life of the College changed since men first arrived? Chaired by Dr Roland Randall



*Stanley Library*



**Dr Roland Randall**

Roland read Geography at St Catharine's, before securing a NATO funded Scholarship for Masters in Biogeography at McGill, Montreal, and returning to complete a PhD in Coastal Ecology back in Cambridge. He initiated the Environmental Science Laboratory at University of Ulster before being elected as one of the first male Fellows at Girton in 1977. During his time at Girton he has been Undergraduate Tutor, Graduate Tutor, Acting Senior Tutor and Acting Chaplain.

**Brian Buncombe**

Brian has been Deputy Head Porter at Girton since 2007. A sixty-something father of two who has been married for 33 years. He has worn many uniforms in a public service career spanning 30 years. Keen golfer, craft beer lover and wearer of colourful socks since 1990.



**George Cowperthwaite**

George matriculated at Girton in 2016 and has studied undergraduate Mathematics for the past three years. He served as President of the JCR from 2018–19, as well as Treasurer of the 2018 Girton Spring Ball and is a keen member of the Girton Amateur Dramatics Society.

**Dr John Davies**

John joined Girton as a Research Fellow in October 1977 as part of the first Ceremony of Admission which admitted men. He was one of the first five male Research Fellows to live in College. He later became an Official Fellow and Lecturer in Chemistry 1979–2014. His research focuses on X-ray crystallography. He is currently a Life Fellow.



**John Longstaff**

John was one of the first male undergraduates at Girton where he read music (1979–83). He came second in the 1988 Leeds Conductors Competition. Positions held include Kiel Opera House, (Germany); Northern Ballet, Young Opera Venture, Sheffield Symphony Orchestra, St. Peter's Church Harrogate. He is also a sought-after orchestrator and arranger including for Northern Ballet.



**64 13:45 – 14:45 An Anatomical Whodunnit? Michelangelo; Sculptor in Bronze**

Two nude male figures riding panthers known as the 'Rothschild Tiger Bronzes' exhibited at the Fitzwilliam Museum in Cambridge have been dated by bronze experts to the years 1506–1508. As a clinical anatomist Professor Abrahams shares his conclusions following close examination of their 'hyper-anatomised' male beauty over the last three years.

*Emily Davies Marquee*



**Professor Peter Abrahams**

Peter is a Life Fellow of Girton College, Professor Emeritus of Clinical Anatomy, Warwick University and UK National Teaching fellow 2011. He is a prolific author and, since 2014, he has been a consultant to the Fitzwilliam Museum on the Rothschild Bronzes by Michelangelo as well as advisor to the Director of the Uffizi, on the anatomy of renaissance statues.

**65**



**14:00 – 14:30 Birds of Prey Performance**

A magnificent flying display of birds of prey by the English School of Falconry.

*The Sports Ground*

**66**



**14:00 – 15:00 Guided Garden Tour**

Explore the historical gardens with Maureen Hackett, Junior Bursar. See page 17, item 27 for more details.

*Croquet Lawn*

**67**



**14:30 – 15:00 Join the Suffrage Movement**

See page 30, item 56 for more information.

*The Festival Field*

**68**

**14:30 – 15:00 Reminiscences of Girton**

**Dr Malcolm Guite**

Readings from Malcolm's book *In Every Corner Sing*, a collection of pieces from his 'Poet's corner' column in the *Church Times*. Poet-Priest Malcolm Guite is Chaplain and Supernumerary Fellow of Girton and teaches at the Faculty of Divinity. *Fellows' Rooms*



## Festival Highlight Surviving Herculaneum

69

**15:00 – 15:45**

Professor Andrew Wallace-Hadrill

The volcanic eruption that buried both Pompeii and Herculaneum in AD 79 is a rare example of a human catastrophe which we can study, allowing us both to see how the inhabitants assessed the risks they faced and how they responded to disaster.

*Emily Davies Marquee*



### **Professor Andrew Wallace-Hadrill OBE FBA**

Formerly Director of the British School at Rome and Master of Sidney Sussex College, Professor Wallace-Hadrill has led a research project in Pompeii and a conservation project in Herculaneum. Author of numerous books and papers, he has presented documentaries for the BBC including *The Other Pompeii: life and death at Herculaneum*.



## 15:00 – 15:45 The Girton Peak, North East Greenland

Dr Fiona Cooke, Dr Harriet Allen  
and Dr Mike Graham

While on an expedition to North East Greenland in 1998, Fiona spotted a 'Girton Peak' in the Stauning Alps amidst a landscape of other fjelds and cols named after Cambridge Colleges. She was intrigued to find out more and traced members of the 1963 Cambridge Expedition which made the first ascent. Today's panel will explore how expeditions have changed in the last 56 years.

*Stanley Library*



### Dr Fiona Cooke

Fiona combines being a Fellow at Girton with working as a Consultant Microbiologist at Addenbrooke's Hospital, where she helps diagnose and manage infections in hospital and community patients. She has published on travel and expedition medicine, and would like to spend more time travelling and exploring far-away places!

### Dr Harriet Allen

Harriet was an undergraduate at Girton and an active member of the then University Explorers and Travelers Society, taking part in expeditions to Iceland and India. Today, she is a Senior Lecturer in the Geography Department and on the Committee of the University's Expeditions Committee.



### Professor Mike Graham

Mike read Mathematics and Part II Engineering at Cambridge. After a PhD at Imperial College London (ICL) and research at Cambridge he has been on the ICL staff since 1970, Professor of Aerodynamics since 1990, Head of Aeronautics Department 1999–2003 and part-retired since 2007.



## Festival Highlight A March Through Time

71

### 15:00 – 15:45 A March Through Time

Bring your banners and your walking shoes and join the Cambridge Alumnae Banner and our Girton suffragists in our promenade around the College ground. The march will include characters from Girton's past, a Victorian brass band, Penny Farthings, together with pupils from Girton Glebe Primary School and the University of Cambridge Primary School at Eddington. Come and celebrate the generations of Girtonians who have worked to change injustice from 1869 to 2019.

*Starts outside Barbara Bodichon Marquee*



72



## 15:45 – 17:00 Closing Ceremony

With children parading their home-made banners on stage.

## 16:10 – 16:30 That Infidel Place

Join Time Will Tell Theatre as we celebrate the pioneering women who championed the principle that young women had the right to a university education. There'll be songs and poems you may recognise in our play as Time Will Tell Theatre take a light-hearted look at the history of Girton from the past to the present.

*Woodlands Court - open air venue*



## 16:30 – 17:00 Blue Plaque Unveiling

The Blue Plaque marks the founding of Girton College, in 1869, as Britain's first residential institution for the higher education of women. The project is in partnership with Cambridge Past, Present and Future and is one of the first blue plaques in South Cambridgeshire.

*Woodlands Court - open air venue*



73



## 17:00 – 18:30

## Girton150 Afternoon Tea and Cake Cutting

You are invited to bring our celebrations to a close with a very special birthday tea featuring a spectacular cake.

*Emily Davies Marquee*

SUNDAY 30 JUNE



## Activities throughout Sunday

74

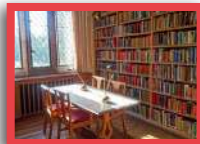


### 9:00 – 12:00 Swimming Pool Open

Lifeguard on duty.

*Swimming Pool*

75



### 10:00 – 15:00 Explore the Library

Explore the award-winning Library. Suitable for all.

See page 21, item 33 for more details.

*Library*

76



### 10:00 – 12:00 and 14:00 – 16:00

### Uncover the Treasures of the Lawrence Room

Explore Girton's own museum. Suitable for all.

See page 21, item 34 for more details.

*The Lawrence Room*

77



### 10:00 – 12:00 and 13:00 – 15:00 Face Painting

Face painting provided by Bobtails. Suitable for all.

*Barbara Bodichon Marquee*

78



### 10:00 – 16:00 Coding with Raspberry Pi

Raspberry Pi computers were invented in Cambridge, and you can come and try some simple activities with them for the whole family. Coloured light and simple animations all created by you, with code!

*Barbara Bodichon Marquee*

79



### 10:00 – 12:00 and 13:00 – 15:00

### Fun Play for Under Fives

Fun toys provided by local baby and toddler group Bobtails.

*Barbara Bodichon Marquee*

80



### 10:00 – 16:00 Retro Gaming

Come and play the classic computer games of past 40 years with the Centre for Computing History, Cambridge.

*The John Marks Sports Pavilion*





81



### 10:30 – 15:00 Suffrage Banner Making

Be inspired by the Cambridge Alumnae Banner, and working with costumer Annabel O'Docherty and artist Yelena Popova, create your own banner to carry during our March Through Time.

*Barbara Bodichon Marquee*

#### Annabel O'Docherty

Girtonian Annabel worked in bookselling/publishing for a few years before training as a Costume-Maker (Wimbledon School of Art 1994). Now freelance after 10 years at the Royal Opera House, she volunteered her skills last year to recreate the Girton/Newnham Suffrage banner of 1908.



#### Yelena Popova

Yelena Popova was Girton Artist in Residence 2016–17. During her stay Yelena developed a series of Post Petrochemical paintings made with soil from the land and ash from the fire places and designed the tapestry that hangs in the corridor near the Fellows' Room. Recently Yelena produce an interactive sculpture *Townlets* based on an atomic structure of plutonium.

82



### 10:00 – 16:00 Treasure Hunt

Can you solve the clues in the Girton150 Treasure Hunt to gain a special prize?

*The Information Point*

83



Self-guided Tours: all day at your own pace

- Garden Tour
- Estate Tour
- People's Portraits

*Collect a leaflet from the Information Point*

84



**11:00 – 13:00 and 14:00 – 14:45**

### Learn to Ride a Penny Farthing

Join the Penny Farthing Club for riding demonstrations. Learn to ride a Penny Farthing yourself or make the most of an unusual photo opportunity. Suitable for all.

*The Sports Ground*

The Penny Farthing Club is a community of riders who enjoy the thrills of riding these iconic bicycles which were invented in 1869. They offer regular training courses for novices and they race internationally and take part in period costume charity rides and Penny Farthing Polo!

85



**10:00 – 16:00 Circus Skills**

Watch the experts and try your hand at some circus skills such as juggling.

*The Sports Ground*

86



**10:00 – 16:00 Human Table Football**

Fun for the whole Family!

*The Sports Ground*

87



**10:00 – 16:00 Birds of Prey**

Learn about birds of prey with the English School of Falconry. A static display all day with flying displays a 12:00 and 14:00 Suitable for all.

*The Sports Ground*

88



**10:00 – 16:00 Water Zorbing**

Fun for the whole family!

*The Sports Ground*

89



**10:00 – 16:00 Archery**

Fancy yourself as Robin Hood, Arrow, Hawkeye or Katniss? Then unleash your inner-archer and have a go at this sport. Suitable for all abilities. Age 4 years or older.

*The Sports Ground*

# Family Activities and Information

## A summary of all our family-friendly activities on Sunday

Below is a list of family-friendly activities available on Sunday at specific times (see individual item numbers in the main programme for more information).

In addition to the items below there are all-day activities (numbers 74 to 89) listed on pages 39 to 41 which are all family-friendly and denoted by a black squirrel.



46	10:00 – 10:30	Meet the Girton Author: Julia Golding
47	10:00 – 11:00	Festival Choral Service
50	10:45 – 11:15	Discover Suffragette Jiu Jitsu
51	10:45 – 11:45	Concert by Queen Victoria's Consort
52	11:15 – 11:45	Join the Girton Fire Brigade
56	12:00 – 12:30	Join the Suffrage Movement
58	12:00 – 14:45	Tea Dances and Music from Queen Victoria's Consort
59	12:00 – 12:30	Birds of Prey Performance
60	12:30 – 13:00	Discover Suffragette Jiu Jitsu
62	13:45 – 14:15	Join the Girton Fire Brigade
65	14:00 – 14:30	Birds of Prey Performance
67	14:30 – 15:00	Join the Suffrage Movement
71	15:00 – 15:45	March Through Time
72	15:45 – 17:00	Closing Ceremony
73	17:00 – 18:30	Girton150 Afternoon Tea

## Baby changing and toilets

There are baby changing facilities and toilets marked on the Festival map. You are welcome to feed your baby anywhere on site but for those who prefer privacy there is a designated room in Old Kitchens which is marked on the Festival map.





### Tea and Coffee

Free tea and coffee on Saturday 9:00 to 17:00 and Sunday 10:00 to 16:00.

*Old Hall*



### Festival Bar

Our Festival Bar will be serving a wide range of alcoholic and soft drinks throughout Friday evening and on Saturday and Sunday from 12 noon.

*The Festival Field*



### Gin Bar

Enjoy a refreshing gin and tonic from a wide choice of artisan gins garnished with the complementing botanicals.

*The Festival Field*



### Water Stations

Water is available all day from the Social Hub Café Bar and Festival Bar. If you bring a re-useable bottle you can re-fill it at various stations.

*Social Hub Café Bar and Festival Bar*



### Breakfast

For guests who are staying at Girton, breakfast is available from 7:30 to 9:00 on Saturday and Sunday.

*Main Hall*



### Food Stalls and Refreshments

Several food stalls will be open from 11:00 – 16:00 to purchase lunch on Saturday and Sunday. Further refreshments and snacks will be available to buy in the new Social Hub Café Bar (open 8:00 to midnight on Saturday and 9:00 – 16:30 on Sunday)

*The Festival Field and Social Hub Café Bar*



### Ice Cream

Available from Jack's Gelato

*The Festival Field*

## Pre-booked Meal on Friday

4



### 20:00 Celebratory BBQ Dinner

With entertainment by comedians Jonathan Mayor, Dr Phil Hammond and Cansu Karabiyik and close-up magic from Tony Rix and Terry Machin.

*Emily Davies Marquee*

## Pre-booked Meals on Saturday

The following events are for pre-booked diners only

40



### 19:45 – 22:00 Anniversary Formal Hall

Relive your time at Girton during the Anniversary Formal Hall with the choir singing grace and a menu selected especially for this celebratory occasion. Table plans can be found outside the Main Hall.

*Main Hall*

41



### 19:45 – 22:00 Anniversary Supper Club

A feast to remember provided by local award-winning Provenance Kitchen. Accompanied by live music from pianist and composer Ben Comeau. Table numbers will be shown on boards outside the marquee.

*Emily Davies Marquee*

## Sunday

73



### Sunday 17:00 – 18:00

#### Girton150 Afternoon Tea and Cake Cutting

You are invited to bring our celebrations to a close with a very special birthday tea featuring a spectacular cake. This is included for all Sunday/Weekend ticket holders.

*Emily Davies Marquee*

## Events, Talks, Panel Discussions and Performances

Events, talks, panel discussions and performances (with the exception of the pre-booked dinners) will be seated on a first come, first served basis. Please make sure that you arrive at your chosen activity as early as possible to secure a place. Please note that the programme is subject to change and in some cases events may be altered to take account of the weather. Woodlands Court is an open-air venue. Shows will continue regardless of the weather. Come prepared but no umbrellas please.

## General

**Cash** – There is a cash machine at the garage on Huntingdon Road.

**Car Park Times** – The gates to the car parks will close at 00.30 on Friday night and 01:30 on Saturday night so please make sure you leave the premises prior to these times if you are not staying overnight in the College. There will be no entry/exit from the car parks from 15:00 to 16:00 on Sunday whilst the March is in progress.

**Children** – are the responsibility of accompanying adults and must be supervised at all times, particularly near the pond which is unfenced.

**Fire** – please leave the venue as directed by the stewards/notices and proceed to the nearest assembly point (Chapel Lawn or Croquet Lawn).

**First Aid** – First aiders will be on site during the whole festival. Please contact the Porters' Lodge if you require any medication to be stored in a fridge. Please call 01223 338999 if you are feeling unwell and need first aid assistance or ask a volunteer.

**Lost Property** – will be kept at the Porters' Lodge.

**Merchandise Stall** – Situated outside Old Hall. Buy a souvenir from our new range of Girton150 merchandise. Saturday 9:00–19:30, Sunday 9:30–16:00.

**Recycling** – We have recycling bins on site and all of our plastic cups are biodegradable.

**Smoking/Vaping** – is not permitted anywhere inside. The designated smoking and vaping area is at the shelter near the maintenance building.

**(Accessible) Toilets and Baby Changing Facilities** – Are available on site and are marked on the Festival map.

**Wi-fi** – SSID: Girton150, Password: 150Festival

## A GREAT CAMPAIGN

The most ambitious and challenging endeavour since Girton's foundation, A Great Campaign aims to make Girton financially sustainable and future-proofed, permanently safeguarding Girton's educational purpose and its core values of academic excellence in diversity. Studying at Girton can be life-changing for students.



A Great Campaign raises funds to grow the endowment and will be transformational for the College.

Priorities for the 150 Anniversary phase are to:

- Endow 20 means-tested undergraduate bursaries;
- Establish much-needed endowed graduate scholarships;
- Fund six University-linked teaching and research Fellowships, in perpetuity;
- Grow the capital of the unrestricted permanent endowment.

The target is to raise £50million from a combination of donations and legacy pledges. To date, 66% of the target has been raised.

### Thank you to everyone who has supported A Great Campaign.

If you have benefited from your studies at Girton and have not yet joined A Great Campaign, then please consider doing so. We shall be very grateful for your gift, at whatever level suits your circumstances. Gifts can take the form of cash, shares or financial instruments; alternatively, you might remember Girton in your Will. The College is a registered charity so giving can be tax efficient. Donation forms can be collected at the Information Point.

More information on making a gift or leaving a legacy can be found online at [Girton150.com](http://Girton150.com)

Please feel free to speak to a member of the Development Office team. We are more than happy to answer any questions you might have, either in person over the course of the weekend or after the event:

+44 (0)1223 766672, [development@girton.cam.ac.uk](mailto:development@girton.cam.ac.uk)



## Friday

	Emily Davies Marquee
17:30	1: Welcome Drinks
18:00	
18:30	2: Opening Ceremony and Fanfare
19:00	3: Celebrating Our Heritage
19:30	
20:00	4: Celebratory BBQ Dinner
20:30	
22:00	5: Live Music & Dancing
22:30	

## Saturday

	Emily Davies Marquee	Barbara Bodichon Marquee
9:30	7: Religion and Equality	8: Girton Challenge: Round One
10:00		
10:15		
10:45	10: The World in 2050 and Beyond	11: Girton Challenge: Round Two
11:00		
11:30		
12:00	16: Women in Law	17: Girton Challenge Final
12:30		
13:00		
13:30		20: Girton Poetry Readings
14:15		
14:30	22: The Festival Lecture	
15:00		
15:30		
16:00	24: The Future of Higher Education	26: Girton's Radical History
16:30		
16:45		
17:00		28: Women in STEM
17:30		
18:00		
19:00	39. Drinks Reception	
19:45	41. Anniversary Supper Club with Live Music	
20:30		
21:00		
21:30		
22:00	Kaleidoscope in Woodlands Court	



	Stanley Library	Other Venues	
9:30	<b>6: Women Growing Older Gracefully?</b>		
10:00			
10:30		<b>9: Burning Down Parliament &amp; Other Stories</b>	
10:45	<b>12: Good Finance, Bad Finance, Ugly Finance</b>		
11:00		<b>13: Guided Garden Tour</b>	
11:30			<b>14: Research Highlight: Zoology</b>
11:45			
12:00	<b>15: Representing People: Portraits of All Kinds</b>		
12:30			
13:00			
13:15	<b>18: Tea Dances</b>	<b>19: Guided Tour of the College Buildings</b>	
14:15			
14:30		<b>23: Early Music Concert</b>	<b>21: Materials Science</b>
15:00			
15:30			
16:00	<b>25: The Secrets of the Lawrence Room</b>		
16:30			
16:45			<b>31: Blue Stockings (with interval drinks, 32)</b>
17:00	<b>29: The Frontiers of Diversity and Inclusiveness</b>	<b>27: A Guided Garden Tour</b>	
17:30			
18:00			
18:15	<b>30: On the Russia – China Border</b>		
18:30			
19:00			
19:45		<b>40. Anniversary Formal Hall</b>	
22:00	Kaleidoscope in Woodlands Court.		

For details of activities running continuously please see pages 21 and 22

## Sunday

	Emily Davies Marquee	Stanley Library	Other Venues	
10:00	44: Women's Suffrage: Did the vote change anything?		46: From Diamonds to Dodos	
10:15				
10:30				
10:45	48: Joan Robinson: Iconoclast		49: Meet the Author: Christina Koning	51: Concert by Queen Victoria's Consort
11:00				
11:15			52: Join the Girton Fire Brigade	
11:30				
11:45			54: Into the Inferno	
12:00	57: Unveiling of the 2019 People's Portrait	55: A Victorian parlour Concert		
12:30				
12:45				
13:00				
13:15			61: Guided Tour of the College Buildings	
13:30				
13:45	64: An Anatomical Whodunnit?	63: Forty Years of Men at Girton		
14:00				
14:15				
14:30				
14:45				
15:00	69: Surviving Herculaneum	70: The Girton Peak	72: A March Through Time	
15:30				
15:45			72: Closing Ceremony & Blue Plaque Unveiling	
17:00	73: Girton150 Afternoon Tea			

For details of activities running continuously please see pages 39 to 41.



Other Venues			
8:00	43. Said Communion Service		
8:30			
10:00	47: Festival Choral Service		45: Guided Tour of the College Buildings
10:45		50: Suffragette Jiu Jitsu	
11:00			
11:15			
11:30	53: Guided Garden Tour		
11:45			
12:00		59: Birds of Prey Performance	56: Join the Suffrage Movement
12:30		60: Suffragette Jiu Jitsu	
13:00			
13:15			
13:45		62: Join the Girton Firebrigade	
14:00	66: Guided Garden Tour		65: Birds of Prey Performance
14:15			
14:30		67: Join the Suffrage Movement	68: Reminiscences of Girton
15:00	71: A March Through Time		
15:45	72: Closing Ceremony & Blue Plaque Unveiling		

### Acknowledgements

Girton College would like to thank the following people and organisations for their contribution to the Festival.

- Absolute AV
- Art Bash
- Bobtails
- Cambridge Marquees
- Cambridge Past Present and Future
- Chaos Circus Skills
- David Johnson Photography
- Die Hard Productions
- Elite Swimming
- Enfield Historical
- Gig Tents
- Girton Women's Institute
- J.N. Admin and Events
- KBL Event Hire
- Madeleine Bradley Floristry
- Magic Unlimited
- Martin Bond Photography
- Mystery Train
- Peacock Archery
- Penny Farthing Club
- Queen Victoria's Consort
- Richings Players
- Royal Welsh College of Music and Drama
- Simpson's Nursery & Garden Centre
- The English School of Falconry
- Time Will Tell
- Tricity Vogue's All-Girl Swing Band
- We Are Sound



